



RECP #: 815024

RECORDED 7/16/2021 AT 9:11 AM BK# 2745 PG# 1153
Debra K. Lee, CLERK OF LARAMIE COUNTY, WY PAGE 1 OF 1

State of Wyoming Corner Record

(In compliance with the *CORNER PERPETUATION AND FILING ACT*, Wyoming Statutes, 1997 Section 33-29-140 et. seq. and the Rules and Regulations of the Board of Professional Engineers and Professional Land Surveyors.)

Reverse side of this form may be used if more space is needed.

Record of original survey and citation of source of historical information (if the corner is lost or obliterated). Description of the corner monumentation, evidence found and/or monument and accessories established to perpetuate the location of this corner. Sketch of relative location of monument, accessories and reference points with course and distance to adjacent corner(s) (if determined in this survey). Method and rationale for reestablishment of a lost or obliterated corner.

RECORD: See GLO Notes

FOUND: Set Stone 1' East of a 6" diameter post set into the ground

Monument Location:

EAST 1/4 CORNER
Section 35
T.15 N. R.67 W.

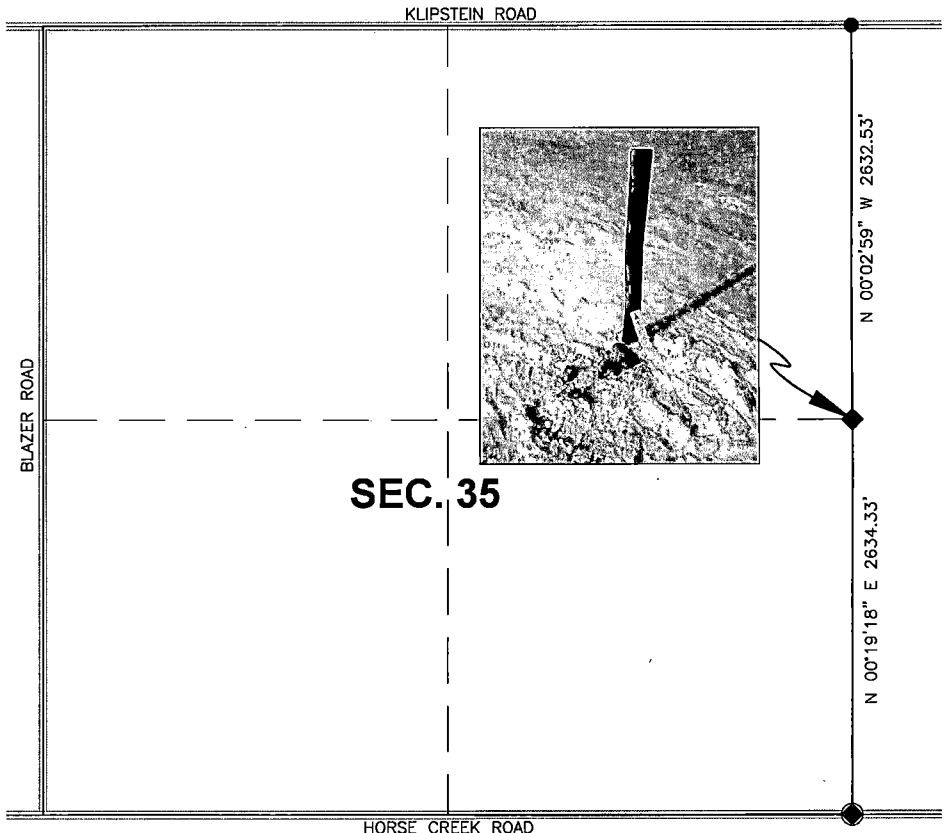
Monument Inscription:



FOUND: Set Stone

LEGEND

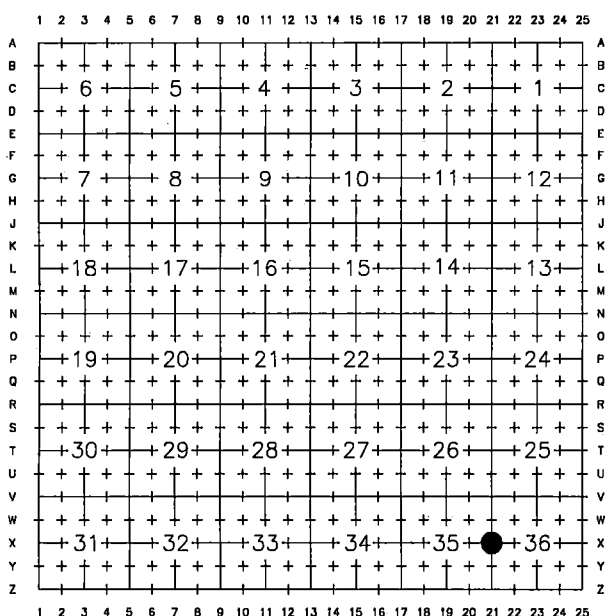
- ◆ = Found Set Stone
- = Found Bent Rebar
- = Found Aluminum Cap "PELS 2817"



Date of Field Work: FEB 2021

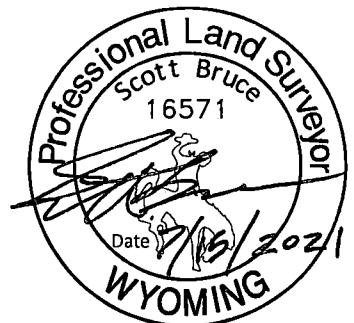
Office Reference: Project # 2-4355

CROSS-INDEX DIAGRAM



Land Surveyor/ Firm/ Address:
PLS # 16571
Scott Bruce
A.V.I. p.c.
1103 Old Town Lane
Cheyenne, Wyoming 82009
Telephone: (307) 637-6017

This corner record was prepared by me or under my direction and supervision.
SEAL & SIGNATURE



Corner Name: East Quarter Corner Section 35, T. 15 N., R. 67 W., 6th P.M.

Cross-Index No.: X - 21

SBRPEPLS/PLSW: March 1994; PLSW January 1998

Laramie County, Wyoming